



Crown - fusion Series 422

Casting body, 2-piece, Full port and Reduced port, Bolted construction, Blowout-proof stem, Anti-Static, ISO mounting pad;

The series 422 trunnion ball valve conform to the following Specifications and Standards:

API 6D/ISO 14313

ASME/ANSI B16.34,B16.10,B16.5,B16.25

NACE MR0103

NACE MR0175/ISO 15156

API 607 / API 608

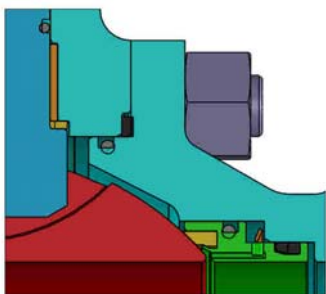
API 641

CSA Z245.15

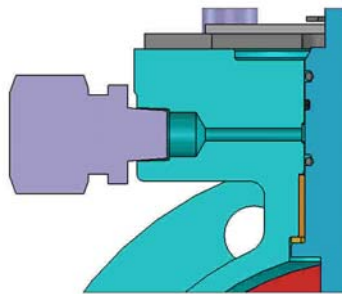
MSS SP-25

MSS SP-55

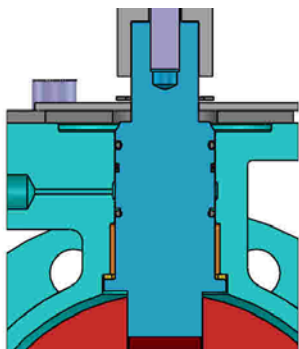
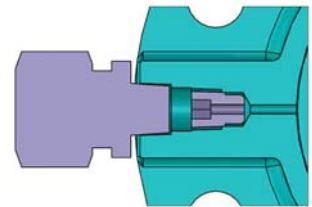
General Design Features:



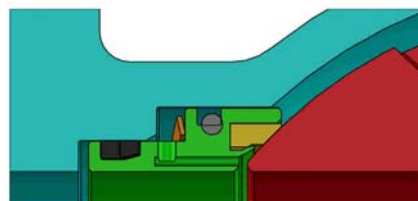
Double Sealed Envelope Connections



Injection fitting



Blowout Proof Stem Design



Fire-Safe Construction: When the soft material is incinerated by fire, the internal springs push the seat holder against the ball to form to metal sealing. Similarly, the soft seat in the body and the stem area are protected by graphite and gasket and O-ring.





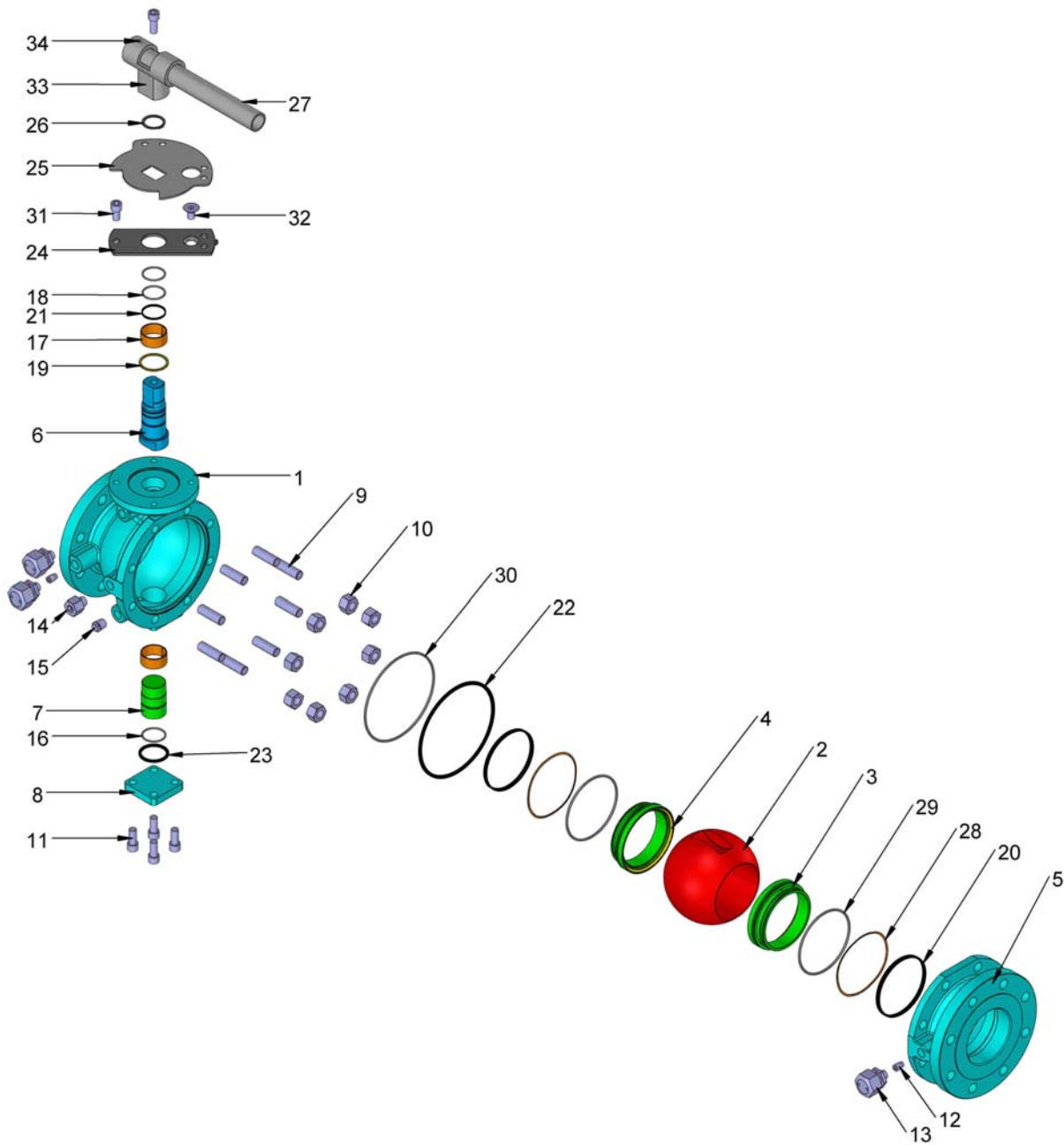
Crown - fusion

Series 422

2"~4" FP Class 150 ~ 300

3"~6" RP Class 150 ~ 300

FLANGED END CONNECTIONS





Crown - fusion

Series 422

2"~4" FP Class 150 ~ 300

3"~6" RP Class 150 ~ 300

FLANGED END CONNECTIONS

Bill of Materials:

ITEM	PART	STAINLESS STEEL	LOW TEMP NACE	NACE
1	BODY	ASTM A351 CF8M	ASTM A352 LCC	ASTM A216 WCB
2	BALL	ASTM A351 CF8M	ASTM A350 LF2+ENP	ASTM A105N+ENP
☆ 3	SEAT HOLDER	ASTM A182 F316	ASTM A350 LF2+ENP	ASTM A105N+ENP
☆ 4	SEAT INSERT	DEVLON/TFM	DEVLON/TFM	DEVLON/TFM
5	ADAPTER	ASTM A351 CF8M	ASTM A352 LCC	ASTM A216 WCB
6	STEM	ASTM A182 F316	ASTM A434 4140+ENP/ 42CrMo+ENP	ASTM A434 4140+ENP/ 42CrMo+ENP
7	TRUNNION	ASTM A182 F316	ASTM A434 4140+ENP/ 42CrMo+ENP	ASTM A434 4140+ENP/ 42CrMo+ENP
8	TRUNNION COVER	ASTM A182 F316	ASTM A350 LF2	ASTM A105N
9	STUD	ASTM A320 L7M WITH ZINC PLATING	ASTM A320 L7M	ASTM A320 L7M
10	NUT	ASTM A194 7ML WITH ZINC PLATING	ASTM A194 7ML	ASTM A194 7ML
11	CAP SCREW	ASTM A320 L7M WITH ZINC PLATING	ASTM A320 L7M	ASTM A320 L7M
12	SMALL CHECK VALVE	316SS	304SS	304SS
13	INJECTION FITTING	304SS	304SS	304SS
14	VENT VALVE	316SS	304SS	304SS
15	DRAIN PLUG	ASTM A182 F316	304SS	304SS
☆ 16	O-RING	HNBR	HNBR	HNBR
17	BUSHING	SS+PTFE	C/S+PTFE	C/S+PTFE
☆ 18	O-RING	HNBR	HNBR	HNBR
☆ 19	STEM THRUST WASHER	DEVLON/RTFM	DEVLON/RTFM	DEVLON/RTFM
☆ 20	PACKING SET	GRAPHITE	GRAPHITE	GRAPHITE
☆ 21	PACKING SET	GRAPHITE	GRAPHITE	GRAPHITE
☆ 22	BODY GASKET	GRAPHITE	GRAPHITE	GRAPHITE
☆ 23	TRUNNION GASKET	GRAPHITE	GRAPHITE	GRAPHITE
24	LOCK PLATE	SS	C/S PLATED	C/S PLATED
25	STOP PLATE	SS	C/S PLATED	C/S PLATED
26	CIRCLIP FOR SHAFT	SPRING STEEL	SPRING STEEL	SPRING STEEL
27	PIPE	C/S PLATED	C/S PLATED	C/S PLATED
28	WAVE SPRING	INCONEL X-750	INCONEL X-750	INCONEL X-750
☆ 29	O-RING	HNBR	HNBR	HNBR
☆ 30	O-RING	HNBR	HNBR	HNBR
31	CAP SCREW	SS	C/S	C/S
32	COUNTERSUNK HEAD SCREW	SS	C/S	C/S
33	HANDLE HOLDER	C/S PLATED	C/S	C/S
34	SET SCREW	SS	C/S	C/S

Note: ☆ Minor repair kit



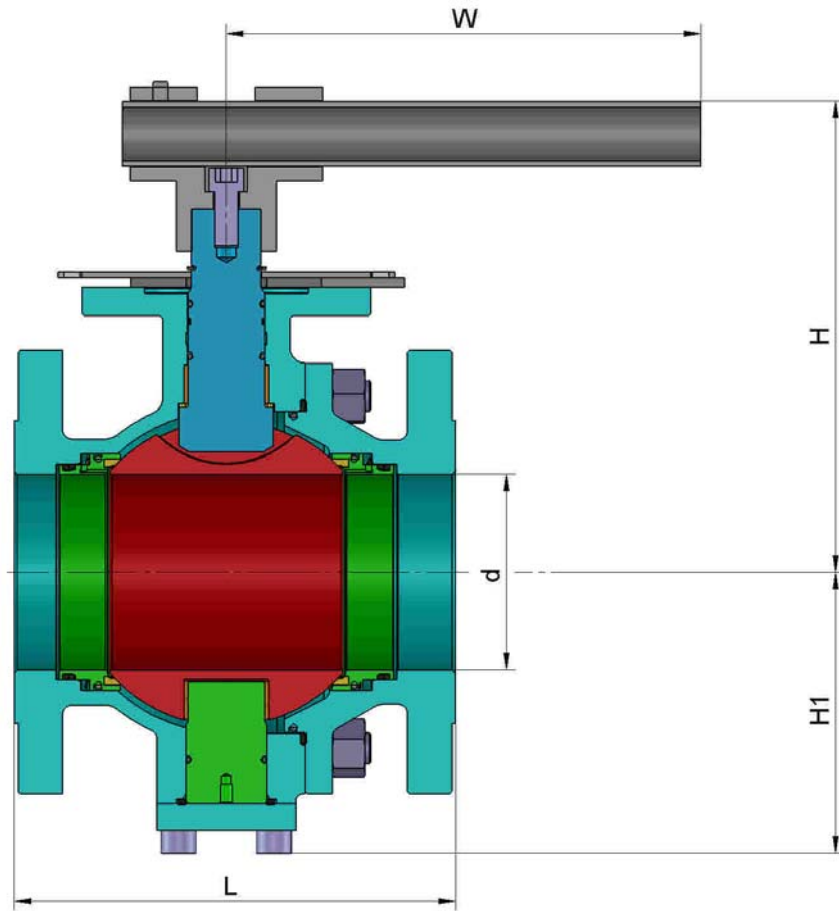


Crown - fusion

Series 422

2"-4" FP Class 150 ~ 300

FLANGED END CONNECTIONS



Weights and Dimensions:

SIZE	CLASS	d	L	H	H1	W	Cv	WEIGHT
in		in/mm	in/mm	in/mm	in/mm	in/mm	gal/min	kg
2"	150	2.00 / 50.8	7.00 / 178	5.55 / 141	4.06 / 103	7.87 / 200	480	15
	300	2.00 / 50.8	8.50 / 216	5.55 / 141	4.06 / 103	7.87 / 200	480	17
3"	150	3.00 / 76.2	8.00 / 203	6.73 / 171	5.06 / 123	14.96 / 380	1150	27
	300	3.00 / 76.2	11.12 / 283	6.73 / 171	5.06 / 123	14.96 / 380	1150	30
4"	150	4.00 / 101.6	9.00 / 229	9.92 / 252	5.75 / 146	27.56 / 700	2110	37
	300	4.00 / 101.6	12.00 / 305	9.92 / 252	5.75 / 146	27.56 / 700	2110	53



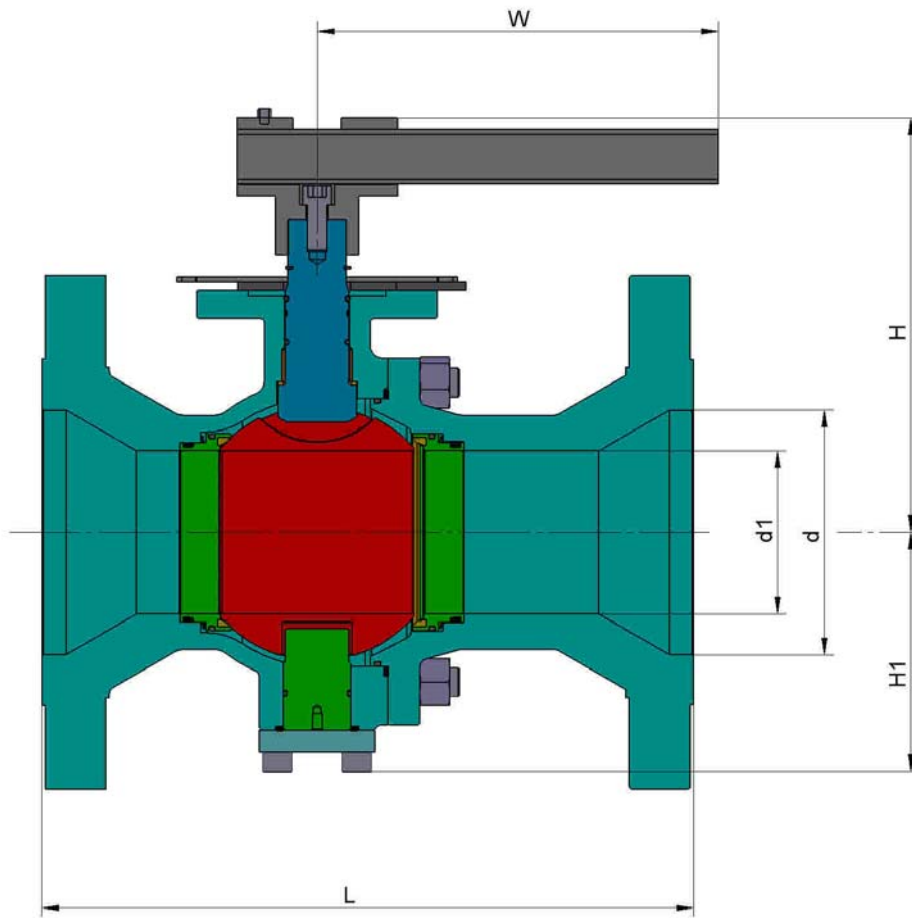


Crown - fusion

Series 422

3"-6" RP Class 150 ~ 300

FLANGED END CONNECTIONS



Weights and Dimensions:

SIZE	CLASS	d1	d	L	H	H1	W	Cv	WEIGHT
in		in/mm	in/mm	in/mm	in/mm	in/mm	in/mm	gal/min	kg
3"X2"	150	2.00 / 50.8	3.00 / 76.2	8.00 / 203	5.55 / 141	4.06 / 103	7.87 / 200	300	16
	300	2.00 / 50.8	3.00 / 76.2	11.12 / 283	5.55 / 141	4.06 / 103	7.87 / 200	300	20
4"X3"	150	3.00 / 76.2	4.00 / 101.6	9.00 / 229	6.73 / 171	5.06 / 123	14.96 / 380	610	29
	300	3.00 / 76.2	4.00 / 101.6	12.00 / 305	6.73 / 171	5.06 / 123	14.96 / 380	610	39
6"X4"	150	4.00 / 101.6	6.00 / 152.4	15.50 / 394	9.92 / 252	5.75 / 146	27.56 / 700	920	51
	300	4.00 / 101.6	6.00 / 152.4	15.88 / 403	9.92 / 252	5.75 / 146	27.56 / 700	920	74



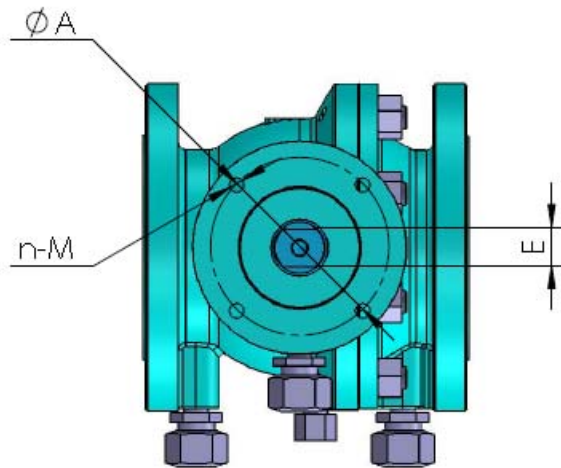
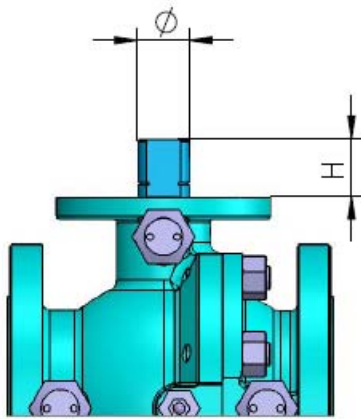


Crown - fusion

Series 422

2"~4" FP Class 150 ~ 300

3"~6" RP Class 150 ~ 300



Actuator mounting DIMENSIONS:

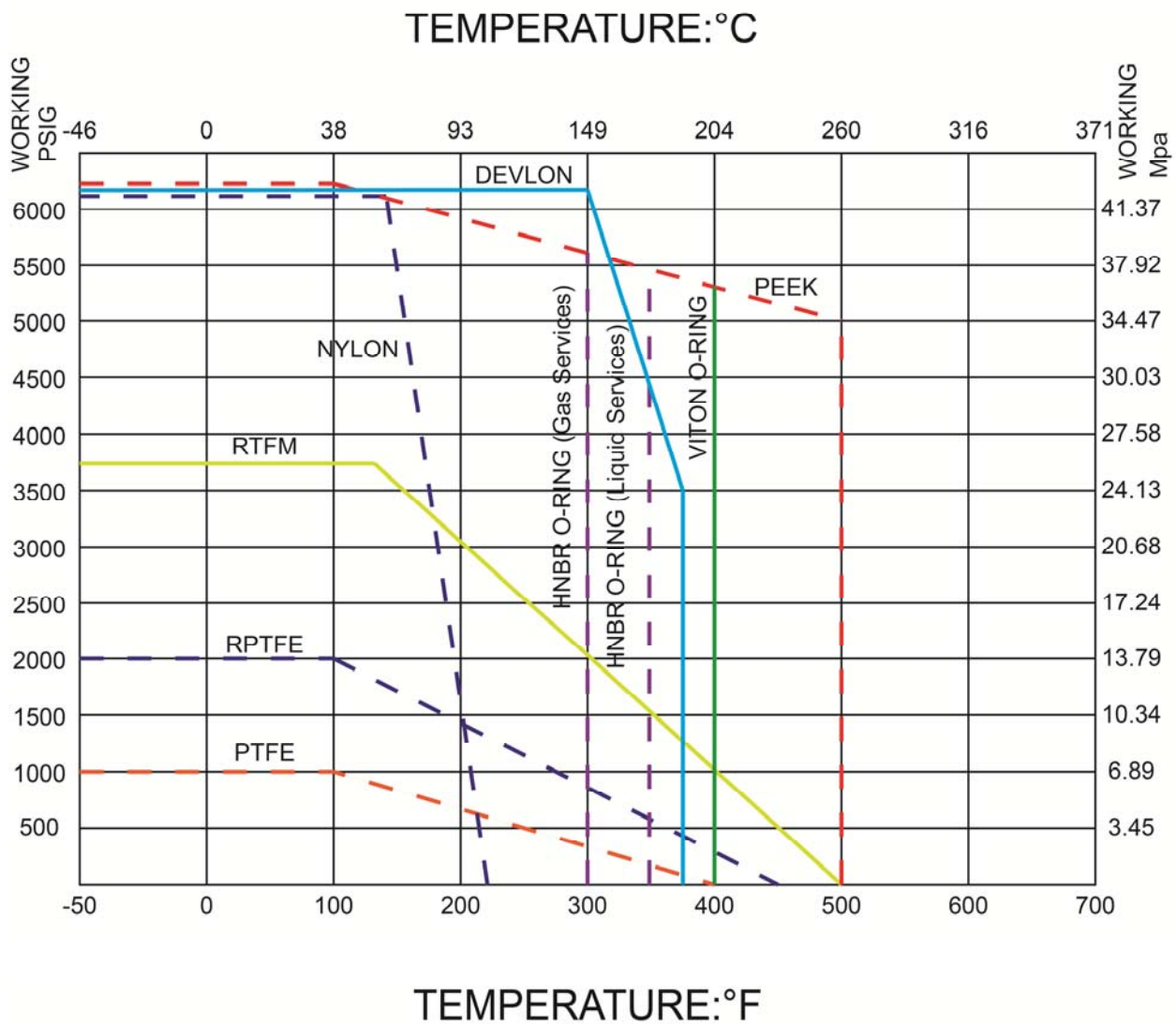
SIZE	CLASS	BORE	ϕA	H	ϕ	E	n-M	ISO 5211#
in			in/mm	in/mm	in/mm	in/mm	in/mm	in/mm
2"	150	FP	2.75 / 70	0.98 / 25	0.87 / 22.15	0.66 / 16.85	4-M8	F07
	300	FP	2.75 / 70	0.98 / 25	0.87 / 22.15	0.66 / 16.85	4-M8	F07
3"	150	FP	4.02 / 102	1.18 / 30	1.10 / 28.15	0.86 / 21.85	4-M10	F10
	300	FP	4.02 / 102	1.18 / 30	1.10 / 28.15	0.86 / 21.85	4-M10	F10
4"	150	FP	4.92 / 125	1.57 / 40	1.42 / 36.15	1.06 / 26.85	4-M12	F12
	300	FP	4.92 / 125	1.57 / 40	1.42 / 36.15	1.06 / 26.85	4-M12	F12
3"	150	RP	2.75 / 70	0.98 / 25	0.87 / 22	0.66 / 16.7	4-M8	F07
	300	RP	2.75 / 70	0.98 / 25	0.87 / 22	0.66 / 16.7	4-M8	F07
4"	150	RP	4.02 / 102	1.14 / 29	1.10 / 28	0.88 / 21.7	4-M10	F10
	300	RP	4.02 / 102	1.14 / 29	1.10 / 28	0.88 / 21.7	4-M10	F10
6"	150	RP	4.92 / 125	1.57 / 40	1.42 / 36	1.05 / 26.7	4-M12	F12
	300	RP	4.92 / 125	1.57 / 40	1.42 / 36	1.05 / 26.7	4-M12	F12





Pressure/Temperature Information

PRESSURE/TEMPERATURE CURVE



TORQUE DATA

Torque Data is published separately and available upon request. Please contact your local representative for details.

Due to continuous development of our products, we reserve the right to modify our product design or construction without prior notice.

