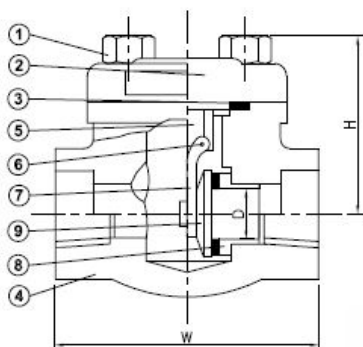


SERIES 875

CLASS 800, SWING CHECK, STANDARD PORT, THREADED ENDS & SOCKET WELD ENDS, BOLTED COVER, HALF STELLITE TRIM, API 602 DESIGN.



875 -SW

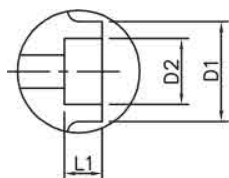


MATERIALS LIST:

| NO. | PART | SPECIFICATION | NACE |
|-----|-----------|------------------|------------------|
| 1 | BOLT | ASTM A193 B7 | ASTM A193 B7M |
| 2 | COVER | ASTM A105 | ASTM A105 |
| 3 | GASKET | 304+GRAPHITE | 304+GRAPHITE |
| 4 | BODY | ASTM A105 | ASTM A105 |
| 5 | SUPPORTER | AISI 304 | AISI 304 |
| 6 | HINGE PIN | ASTM A276 410 | ASTM A276 410 |
| 7 | HINGE | ASTM A105 | ASTM A105 |
| 8 | SEAT RING | ASTM A276 410+HF | ASTM A276 410+HF |
| 9 | DISC | ASTM A276 420 | ASTM A276 420 |

OPTIONS: (Code: Description)

FT: Full Stellite Trim.
 BB: Welded Cover.
 LF2,316SS and other steel -alloys materials are available.
 Full-Stellite and other trim materials are available.



SOCKET WELD ENDS

IMENSIONS OF SOCKET WELD ENDS

| SIZE | | D1 | | D2 | | L1 | |
|--------|----|------|----|------|------|------|------|
| IN | MM | IN | MM | IN | MM | IN | MM |
| 1/2" | 15 | 1.34 | 34 | 0.86 | 21.8 | 0.38 | 9.6 |
| 3/4" | 20 | 1.57 | 40 | 1.07 | 27.1 | 0.50 | 12.7 |
| 1" | 25 | 1.89 | 48 | 1.33 | 33.8 | 0.50 | 12.7 |
| 1-1/4" | 32 | 2.52 | 64 | 1.68 | 42.6 | 0.50 | 12.7 |
| 1-1/2" | 40 | 2.52 | 64 | 1.92 | 48.7 | 0.50 | 12.7 |
| 2" | 50 | 3.07 | 78 | 2.41 | 61.1 | 0.63 | 15.9 |

DIMENSIONS:

| SIZE | | BORE | D | | W | | H | |
|--------|----|------|------|------|------|-----|------|-----|
| IN | MM | | IN | MM | IN | MM | IN | MM |
| 1/2" | 15 | RP | 0.39 | 10 | 3.11 | 79 | 2.40 | 61 |
| 3/4" | 20 | RP | 0.54 | 13.8 | 3.62 | 92 | 2.40 | 61 |
| 1" | 25 | RP | 0.71 | 18 | 4.37 | 111 | 3.07 | 78 |
| 1-1/4" | 32 | RP | 0.94 | 24 | 4.72 | 120 | 3.31 | 84 |
| 1-1/2" | 40 | RP | 1.14 | 29 | 4.72 | 120 | 3.31 | 84 |
| 2" | 50 | RP | 1.38 | 36.5 | 5.51 | 140 | 4.65 | 118 |

DUE TO CONTINUOUS DEVELOPMENT OF OUR PRODUCTS, WE RESERVE THE RIGHT TO MODIFY OUR PRODUCT DESIGN OR CONSTRUCTION WITHOUT PRIOR NOTICE.