

SERIES 860

CLASS 800, RISING STEM, STANDARD PORT, THREADED ENDS & SOCKET WELD ENDS, BOLTED BONNET, HALF STELLITE TRIM, API 602 DESIGN.

MATERIALS LIST:

NO.	PART	SPECIFICATION	NACE
1	HANDWHEEL	MALLEABLE IRON	MALLEABLE IRON
2	LOCK NUT	ASTM A194 2H	ASTM A194 2HM
3	WASHER	CARBON STEEL AISI 1020	CARBON STEEL AISI 1020
4	STEM NUT	ASTM A276 410	ASTM A276 410
5	EYE BOLT	ASTM A193 B7	ASTM A193 B7M
6	EYE BOLT NUT	ASTM A194 2H	ASTM A194 2HM
7	GLAND FLANGE	ASTM A105	ASTM A105
8	PACKING GLAND	ASTM A276 410	ASTM A276 410
9	PACKING	GRAPHITE	GRAPHITE
10	EYE BOLT PIN	ASTM A276 410	ASTM A276 410
11	BOLT	ASTM A193 B7	ASTM A193 B7M
12	BONNET	ASTM A105	ASTM A105
13	GASKET	304+GRAPHITE	304+GRAPHITE
14	STEM	ASTM A276 410	ASTM A276 410
15	DISC	ASTM A276 420	ASTM A276 420
16	SEAT	INTEGRAL+HF	INTEGRAL+HF
17	BODY	ASTM A105	ASTM A105

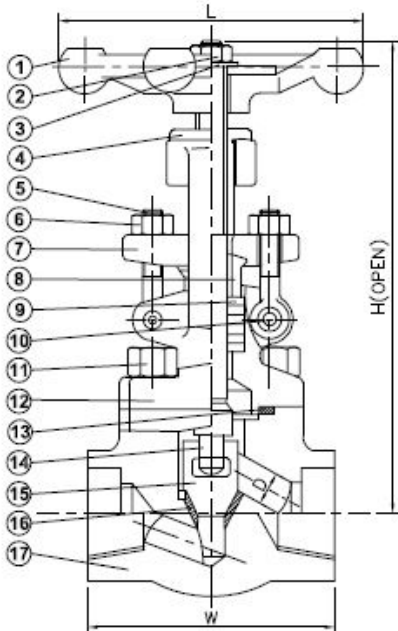
OPTIONS: (Code: Description)

FT: Full Stellite Trim.

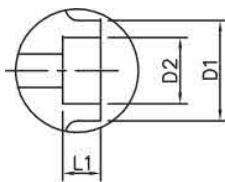
BB: Welded Bonnet.

LF2,316SS, and other steel -alloys materials are available.

Full-Stellite and other trim materials are available.



860-TF



SOCKET WELD ENDS

DIMENSIONS OF SOCKET WELD ENDS

SIZE		D1		D2		L1	
IN	MM	IN	MM	IN	MM	IN	MM
1/2"	15	1.34	34	0.86	21.8	0.38	9.6
3/4"	20	1.57	40	1.07	27.1	0.50	12.7
1"	25	1.89	48	1.33	33.8	0.50	12.7
1-1/4"	32	2.52	64	1.68	42.6	0.50	12.7
1-1/2"	40	2.52	64	1.92	48.7	0.50	12.7
2"	50	3.07	78	2.41	61.1	0.63	15.9

DIMENSIONS:

SIZE		BORE	D		W		H		L	
IN	MM		IN	MM	IN	MM	IN	MM	IN	MM
1/2"	15	RP	0.39	10	3.11	79	6.46	164	3.94	100
3/4"	20	RP	0.51	13	3.62	92	6.46	164	3.94	100
1"	25	RP	0.69	17.5	4.37	111	7.99	203	4.92	125
1-1/4"	32	RP	0.91	23	4.72	120	8.82	224	6.30	160
1-1/2"	40	RP	1.18	30	5.98	152	10.24	260	6.30	160
2"	50	RP	1.38	35	6.77	172	11.81	300	7.09	180

DUE TO CONTINUOUS DEVELOPMENT OF OUR PRODUCTS ,WE RESERVE THE RIGHT TO MODIFY OUR PRODUCT DESIGN OR CONSTRUCTION WITHOUT PRIOR NOTICE.