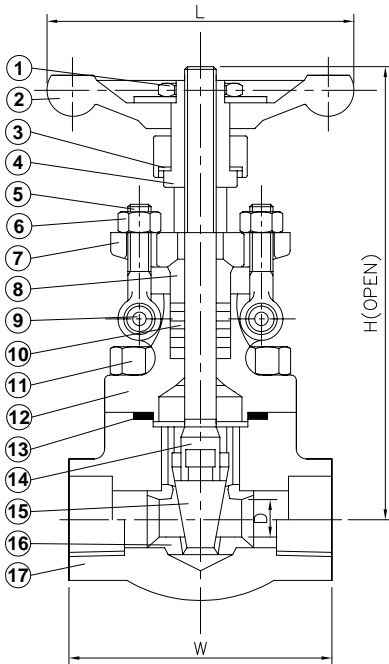


# FORGED STEEL GATE VALVES (API 602)



## SERIES 850

CLASS 800, RISING STEM, FULL PORT, THREADED ENDS & SOCKET WELD ENDS, BOLTED BONNET, HALF STELLITE TRIM, API 602 DESIGN.



### MATERIALS LIST:

NO.	PART	SPECIFICATION
1	LOCK NUT	CARBON STEEL AISI 1020
2	HANDWHEEL	MALLEABLE IRON
3	WASHER	ASTM A276 430
4	STEM NUT	ASTM A276 410
5	EYE BOLT	ASTM A276 410
6	EYE BOLT NUT	ASTM A194 2H
7	GLAND FLANGE	ASTM A216 WCB
8	PACKING GLAND	ASTM A276 410
9	EYE BOLT PIN	ASTM A276 410
10	PACKING	GRAPHITE
11	BOLT	ASTM A193 B7
12	BONNET	ASTM A105
13	GASKET	GRAPHITE
14	STEM	ASTM A276 410
15	WEDGE	ASTM A276 420
16	SEAT RING	ASTM A276 410+HF
17	BODY	ASTM A105

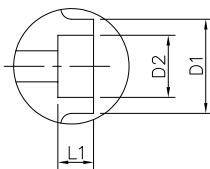
### OPTIONS: (Code: Description)

FT: Full Stellite Trim.

BB: Welded Bonnet.

(Materials of Body & Bonnet:F5,F11,F304 and F316 are available.)

### DIMENSIONS OF SOCKET WELD ENDS



SOCKET WELD ENDS

SIZE		D1		D2		L1	
IN	MM	IN	MM	IN	MM	IN	MM
3/8"	10	1.34	34	0.69	17.6	0.38	9.6
1/2"	15	1.34	34	0.86	21.8	0.38	9.6
3/4"	20	1.57	40	1.07	27.1	0.50	12.7
1"	25	1.89	48	1.33	33.8	0.50	12.7
1-1/4"	32	2.52	64	1.68	42.6	0.50	12.7
1-1/2"	40	2.52	64	1.92	48.7	0.50	12.7
2"	50	3.07	78	2.41	61.1	0.63	15.9

### DIMENSIONS:

SIZE		D		W		H		L	
IN	MM	IN	MM	IN	MM	IN	MM	IN	MM
3/8"	10	0.39	10	3.11	79	6.22	158	3.94	100
1/2"	15	0.51	13	3.62	92	6.46	164	3.94	100
3/4"	20	0.71	18	4.37	111	7.64	194	4.92	125
1"	25	0.94	24	4.72	120	8.70	221	6.30	160
1-1/4"	32	1.14	29	4.72	120	9.61	244	6.30	160
1-1/2"	40	1.44	36.5	5.51	140	11.10	282	7.09	180
2"	50	1.83	46.5	7.01	178	12.99	330	7.87	200

DUE TO CONTINUOUS DEVELOPMENT OF OUR PRODUCTS, WE RESERVE THE RIGHT TO MODIFY OUR PRODUCT DESIGN OR CONSTRUCTION WITHOUT PRIOR NOTICE.