



Crown - fusion

Series 317

Isolation Ball Valve

1-Piece, Venturi Port, 2"x3/4"x2", FNPT x MNPT Ends

6000 WOG High Pressure Ball Valve

C/W 2-1/2" NPT Port Hole

ASME B16.34 Standard

Blowout Proof Stem

Double Seal at Stem and Body Connections

Material to NACE MR0175

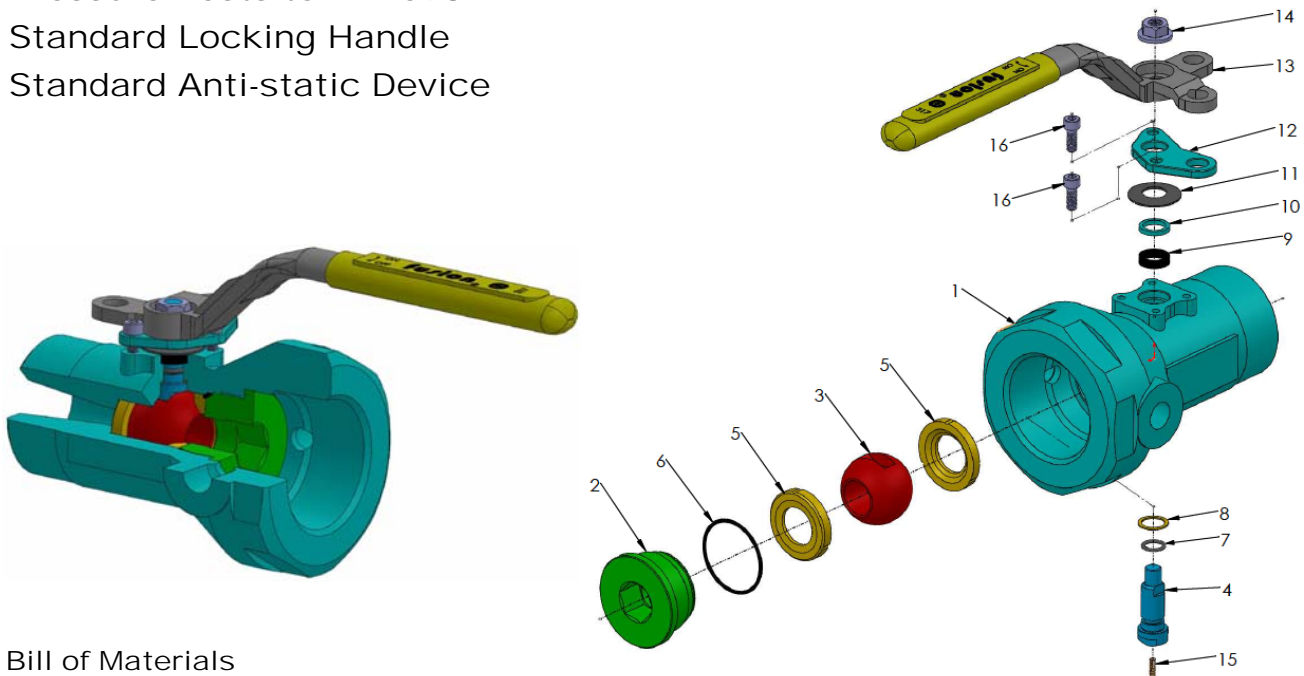
Standard Marking to MSS SP-25

Fire Safe Certified to API 607

Pressure Tests to API 598

Standard Locking Handle

Standard Anti-static Device



Bill of Materials

ITEM	PART	SOUR LOW TEMP (NACE)	SOUR (NACE)	Q'TY
1	BODY	ASTM A352 LCC	ASTM A216 WCB	1
2	SEAT RETAINER	ASTM A352 LCC	ASTM A216 WCB	1
3	BALL	ASTM A564 630	ASTM A564 630	1
4	STEM	ASTM A564 630	ASTM A564 630	1
☆ 5	SEAT	VIRGIN PEEK	VIRGIN PEEK	2
☆ 6	BODY O-RING	VITON GLT	VITON	1
☆ 7	STEM O-RING	VITON GLT	VITON	1
☆ 8	THRUST WASHER	PEEK	PEEK	1
☆ 9	PACKING	GRAPHITE	GRAPHITE	1
10	PACKING FOLLOW	304SS	304SS	1
11	BELLEVILLE WASHER	304SS	304SS	1
12	GLAND FLANGE	CS	CS	1
13	HANDLE	CS	CS	1
14	HANDLE NUT	CS	CS	1
15	SRPING	304SS	304SS	
16	CAP SCREWS	ASTM A320 L7M	ASTM A320 L7M	

Note 1 : ☆ Minor repair kit ;

Option 1 : (ITEM 6) Body O-RING and (ITEM 7) Stem O-RING : HNBR

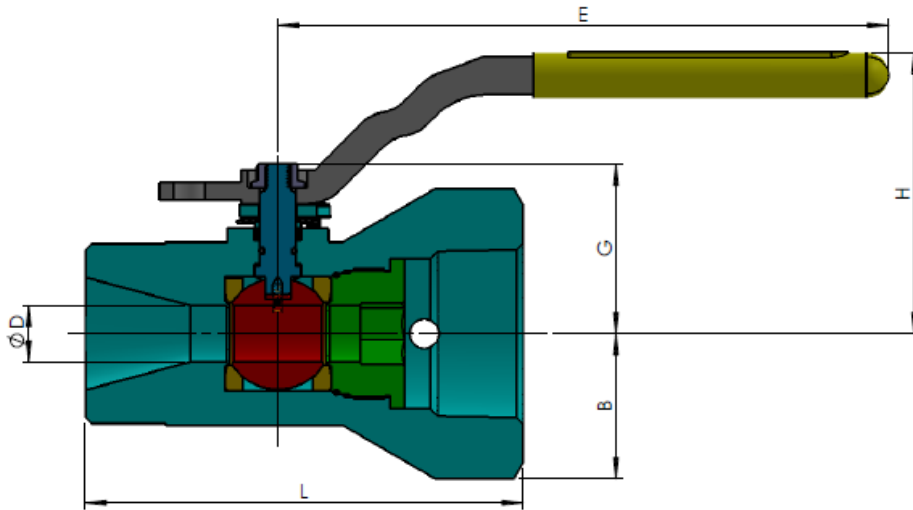
FVSFI-CAT-317-0324



Crown - fusion



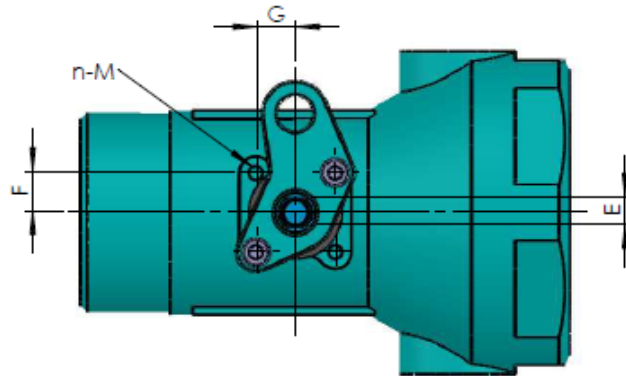
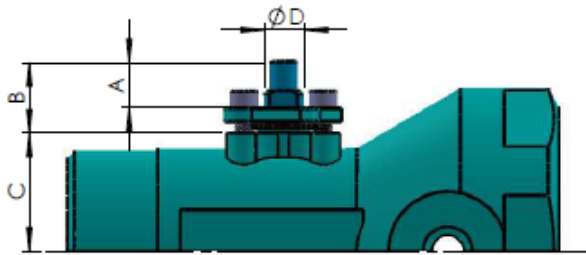
Crown - fusion Series 317



Weights and Dimensions

SIZE	WOG	BORE	D	L	B	G	H	E	Cv	WEIGHT
In / DN			In / mm	In / mm	In / mm	In / mm	In / mm	In / mm	Gal / min	Kg / Lbs
2 / 50	6000	VP	0.75 / 19.1	5.83 / 148	1.93 / 49	2.09 / 53	3.54 / 90	8.07 / 205	60	4.0 / 8.8

Note 1 : "L" DIMENSION ± 0.06 in. / 1.5 mm



Actuator Mounting Dimensions

SIZE	BORE	A	B	C	D	E(FLAT)	F	G	n-M
In / DN		In / mm	In / mm	In / mm	In / mm	In / mm	In / mm	In / mm	mm
2 / 50	VP	0.43 / 11	0.87 / 22	1.42 / 36	0.47 / 12	0.33 / 8.5	0.47 / 12	0.47 / 12	4-M5X9 DEEP

Due to continuous development of our products, we reserve the right to modify our product design or construction without prior notice.

