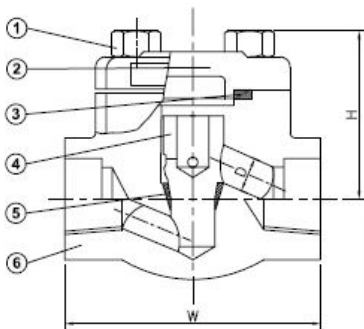


**SERIES 870**

CLASS 800, LIFT CHECK, STANDARD PORT, THREADED ENDS & SOCKET WELD ENDS, BOLTED COVER, HALF STELLITE TRIM, API 602 DESIGEND.



**870 -SW**

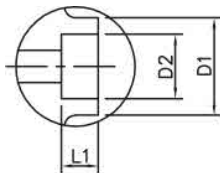


**MATERIALS LIST:**

NO.	PART	SPECIFICATION	NACE
1	BOLT	ASTM A193 B7	ASTM A193 B7M
2	COVER	ASTM A105	ASTM A105
3	GASKET	304+GRAPHITE	304+GRAPHITE
4	DISC	ASTM A276 420	ASTM A276 420
5	SEAT	INTEGRAL+HF	INTEGRAL+HF
6	BODY	ASTM A105	ASTM A105

**OPTIONS: (Code: Description)**

FT: Full Stellite Trim.  
 BB: Welded Cover.  
 LF2,316SS, and other steel -alloys materials are available.  
 Full-Stellite and other trim materials are available.



**SOCKET WELD ENDS**

**DIMENSIONS OF SOCKET WELD ENDS**

SIZE		D1		D2		L1	
IN	MM	IN	MM	IN	MM	IN	MM
1/2"	15	1.34	34	0.86	21.8	0.38	9.6
3/4"	20	1.57	40	1.07	27.1	0.50	12.7
1"	25	1.89	48	1.33	33.8	0.50	12.7
1-1/4"	32	2.52	64	1.68	42.6	0.50	12.7
1-1/2"	40	2.52	64	1.92	48.7	0.50	12.7
2"	50	3.07	78	2.41	61.1	0.63	15.9

**DIMENSIONS:**

SIZE		BORE	D		W		H	
IN	MM		IN	MM	IN	MM	IN	MM
1/2"	15	RP	0.39	10	3.11	79	2.40	61
3/4"	20	RP	0.51	13	3.62	92	2.40	61
1"	25	RP	0.69	17.5	4.37	111	3.07	78
1-1/4"	32	RP	0.91	23	4.72	120	3.31	84
1-1/2"	40	RP	1.18	30	5.98	152	3.31	84
2"	50	RP	1.38	35	6.77	172	4.65	118

DUE TO CONTINUOUS DEVELOPMENT OF OUR PRODUCTS, WE RESERVE THE RIGHT TO MODIFY OUR PRODUCT DESIGN OR CONSTRUCTION WITHOUT PRIOR NOTICE