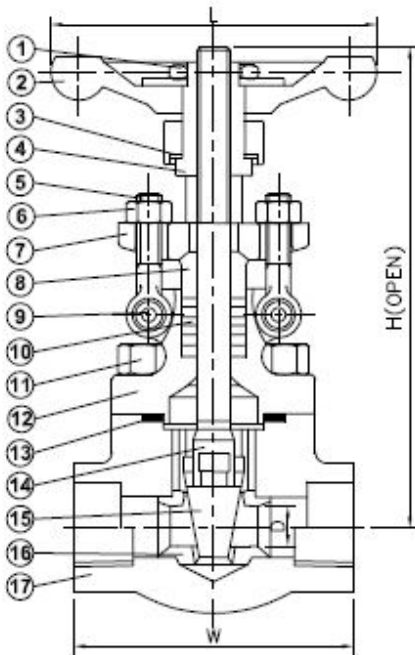


SERIES 850

CLASS 800, RISING STEM, STANDARD PORT, THREADED ENDS & SOCKET WELD ENDS, BOLTED BONNET, HALF STELLITE TRIM, API 602 DESIGEND.



850-TF



MATERIALS LIST:

NO.	PART	SPECIFICATION	NACE
1	LOCK NUT	A194-2H	A194-2HM
2	HANDWHEEL	MALLEABLE IRON	MALLEABLE IRON
3	WASHER	ASTM A276 430	ASTM A276 430
4	STEM NUT	ASTM A276 410	ASTM A276 410
5	EYE BOLT	ASTM A193 B7	ASTM A193 B7M
6	EYE BOLT NUT	ASTM A194 2H	ASTM A194 2HM
7	GLAND FLANGE	ASTM A105	ASTM A105
8	PACKING GLAND	ASTM A276 410	ASTM A276 410
9	EYE BOLT PIN	ASTM A276 410	ASTM A276 410
10	PACKING	GRAPHITE	GRAPHITE
11	BOLT	ASTM A193 B7	ASTM A193 B7M
12	BONNET	ASTM A105	ASTM A105
13	GASKET	304+GRAPHITE	304+GRAPHITE
14	STEM	ASTM A276 410	ASTM A276 410
15	WEDGE	ASTM A276 420	ASTM A276 420
16	SEAT RING	ASTM A276 410+HF	ASTM A276 410+HF
17	BODY	ASTM A105	ASTM A105

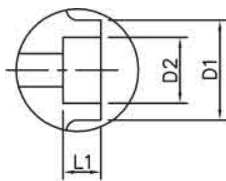
OPTIONS: (Code: Description)

FT: Full Stellite Trim.

BB: Welded Bonnet.

LF2,316SS, and other steel -alloys materials are available.

Full-Stellite and other trim materials are available.



SOCKET WELD ENDS

DIMENSIONS OF SOCKET WELD ENDS

SIZE		D1		O2		L1	
IN	MM	IN	MM	IN	MM	IN	MM
1/2"	15	1.34	34	0.86	21.8	0.38	9.6
3/4"	20	1.57	40	1.07	27.1	0.50	12.7
1"	25	1.89	48	1.33	33.8	0.50	12.7
1-1/4"	32	2.52	64	1.68	42.6	0.50	12.7
1-1/2"	40	2.52	64	1.92	48.7	0.50	12.7
2"	50	3.07	78	2.41	61.1	0.63	15.9

DIMENSIONS:

SIZE		BORE	D		W		H		L	
IN	MM		IN	MM	IN	MM	IN	MM	IN	MM
1/2"	15	RP	0.39	10	3.11	79	6.34	161	3.94	100
3/4"	20	RP	0.51	13	3.62	92	6.42	163	3.94	100
1"	25	RP	0.71	18	4.37	111	7.72	196	4.92	125
1-1/4"	32	RP	0.94	24	4.72	120	8.78	223	6.30	160
1-1/2"	40	RP	1.14	29	4.72	120	9.88	251	6.30	160
2"	50	RP	1.44	36.5	5.51	140	11.42	290	7.09	180

DUE TO CONTINUOUS DEVELOPMENT OF OUR PRODUCTS, WE RESERVE THE RIGHT TO MODIFY OUR PRODUCT DESIGN OR CONSTRUCTION WITHOUT PRIOR NOTICE.